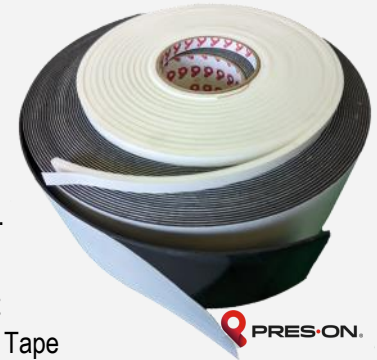


P4300 SERIES

P4300 Series - Cross-Linked Polyethylene Double Sided Foam Tape (Acrylic PSA):



- Compressible Foam
- Closed Cell Gasket
- Chemical Resistance
- Economic
- Skin Contact
- Food Contact
- Flexible
- High Performance Adhesive.

Markets:

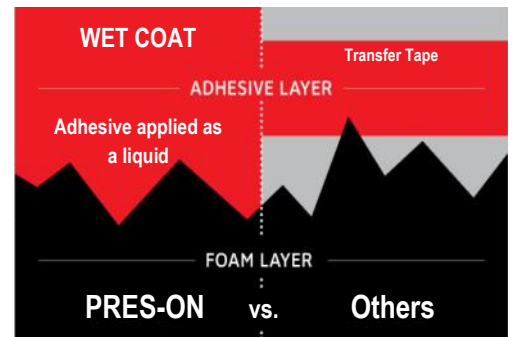
- Packaging
- Clean Rooms
- Construction
- Food Processing Equipment
- Point of Display
- Lighting
- Graphics / Signs
- Multi-Purpose Double Sided Tape

Excellent Choice for Applications Requiring:

- Double Side High Bond Tape
- Air Tight Gap Seals
- Chemical Resistant Seals
- Permanent Bond, Flexible Applications
- Economic Option
- Black or White Color Option

**PRES-ON'S
WET COAT
ADHESIVE
ADVANTAGE.**

Our adhesive is applied as a liquid. Promoting a superior bond to the texture of the foam. Reduces Delaminating.



- Foam Thickness:** 1/32", 1/16", 1/8", 1/4"
- Roll Widths:** 1/4" up to 50"
- Roll Lengths:** 216' (1/32" thick)
108' (1/16" thick)
54' (1/8" & 1/4" thick)
Long Length Spools
- Shapes:** Customizable Cut Shapes, Sheets

Material:	Cross Linked Polyethylene (LDPE) Foam
Pres-On Tape Material Category:	PE Foam Tape
Hardness:	Soft
Color:	White, or Black
Texture:	Smooth
Cell Type:	Closed Cell
UV - For Outdoors (sunlight)	Black; Good White; Not Recommended

Adhesive:	Acrylic, Permanent	Direct Coat (wet coat)
Double Sided Adhesive Tape	Yes	
Single Sided Series	PF1600	
Adhesive Indoor Rating	Excellent	
Adhesive Outdoor Rating	Indirect Exposure to Elements	
Adhesive Functional Temperature	0-225° F	
Alternative Adhesive (special option):	Rubber, Permanent, See P4200 Series	Contact Pres-On for Specs
No Adhesive (special option)	PF1600 Series, Plain	Order Min / Mult. Required

Adhering to a higher standard™



Find the right product for your application today! Call Pres-On at 800-323-7467. visit www.preson.com, or email sales@preson.com.

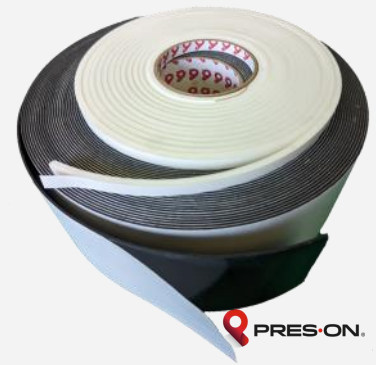
2600 E. 107th Street | Bolingbrook, IL 60440
630-628-2255 | www.preson.com

P4300 SERIES

P4300 Series - Cross-Linked Polyethylene (LDPE)

Double Sided Foam Tape (Acrylic PSA):

- Compressible Foam ▪ Closed Cell Gasket ▪ Chemical Resistance ▪ Economic
- Skin Contact ▪ Food Contact ▪ High Performance Adhesive.



Material:	Cross Linked Polyethylene (LDPE) Foam
Pres-On Tape Material Category:	PE Foam Tape
Hardness:	Soft
Color:	White, or Black
Texture:	Smooth
Cell Type:	Closed Cell
UV - For Outdoors (sunlight)	Black; Good White; Not Recommended

Density:

Thickness:	Density:		
	6 pcf	4 pcf	2 pcf
1/32"	P4303	N/A	N/A
1/16"	N/A	P4306	N/A
1/8"	N/A	N/A	P4312
1/4"	N/A	N/A	P4325

Note: Density and material specs differ by thickness.

Material Technical Data	6 pcf	4 pcf	2 pcf	Test / Note:
Chemical Resistance	Excellent	Excellent	Excellent	
Compression Strength @ 25% Compression	55 psi	10 psi	5 psi	ASTM D3575
Compression Strength @ 50% Compression	Not Available	21 psi	14 psi	ASTM D3575
Density	6 pcf	4 pcf	2 pcf	ASTM D1056
Durometer Shore	84 OO	64 OO	51 OO	
Compression Set (% Original Thickness)	11	20	31	ASTM D3575
Tensile Strength, Machine Direction	59 psi	17 psi	7 psi	ASTM D3575
Tensile Strength, Cross-Machine Direction	76 psi	26 psi	12 psi	ASTM D3575
Tensile Elongation, (%) Machine Direction	263	188	136	ASTM D3575
Tensile Elongation, (%) Cross-Machine Direction	170	132	111	ASTM D3575
Tear Resistance, Machine Direction	59 psi	17 psi	7 psi	ASTM D3575
Tear Resistance, Cross-Machine Direction	76 psi	26 psi	12 psi	ASTM D3575
Thermal Stability, AVE MD%	-0.8	-1.0	-1.4	ASTM D3575
Thermal Stability, AVE CD% % Change	-0.2	-0.3	-0.7	ASTM D3575
Temperature High	215°F	215°F	215°F	
Food Safety	Food Contact	Food Contact	Food Contact	

Adhesive	Type / Rating	
Adhesive	Acrylic, Permanent	Direct Coat (wet coat)
Double Sided Adhesive Tape	Yes	
Single Sided Series	PF1600	
Adhesive Indoor Rating	Excellent	
Adhesive Outdoor Rating	Indirect Exposure to Elements	
Adhesive Functional Temperature	0-225° F	
Alternative Adhesive (special option):	Rubber, Permanent, See P4200 Series	Contact Pres-On for Specs
No Adhesive (special option)	PF1600 Series, Plain	Order Min / Mult. Required

Color and Finish may vary based on lot. Measurement tolerances vary based on thickness and width, contact Pres-On for specific tolerance to finished product. **APPLICATION NOTES:** Ensure surfaces are well unified, clean, dry, and free of dirt / oils. Apply firm and even pressure to adhesive-to-surface contact. Allow proper temperature / time to enhance bond strength. It is the end user's responsibility to determine final suitability of Pres-On's product for use in their application. **For Terms and Conditions:** <https://www.preson.com/terms-conditions/>

Adhering to a higher standard™